

Neurological Alliance

Neuro Numbers



The NHS spent over
£4.4 BILLION
on neurological conditions
in 2012/13, representing 4.2%
of overall NHS expenditure¹



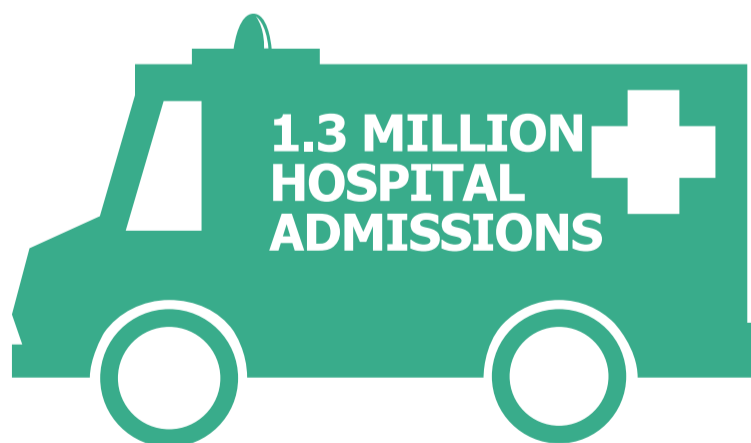
OVER 700,000 EMERGENCY ADMISSIONS

were recorded for people with a neurological
diagnosis in 2012/13, costing the NHS over
£750 million²

Overall NHS expenditure
on neurological conditions
increased by over

200%↑

between 2003/4 and 2012/13³



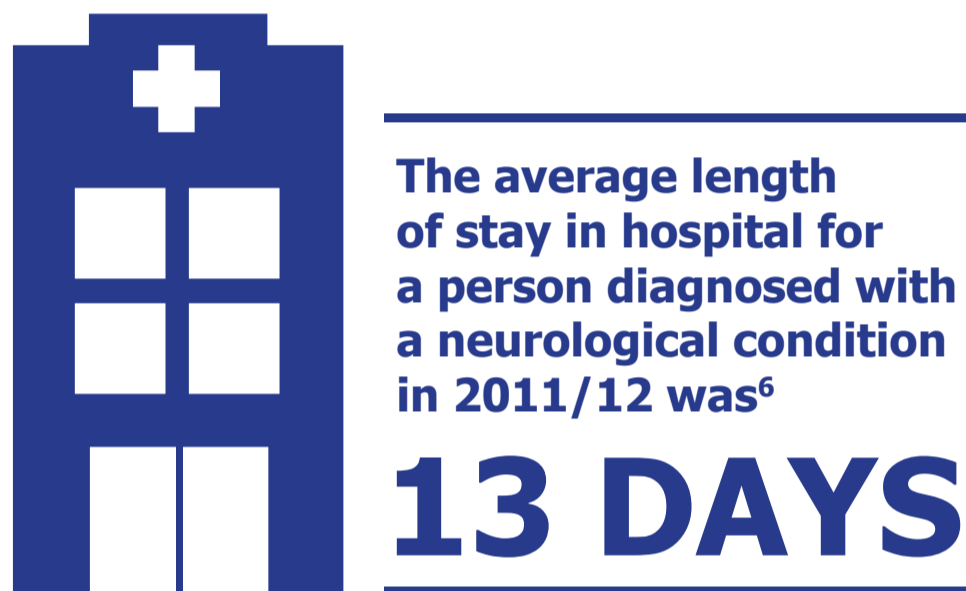
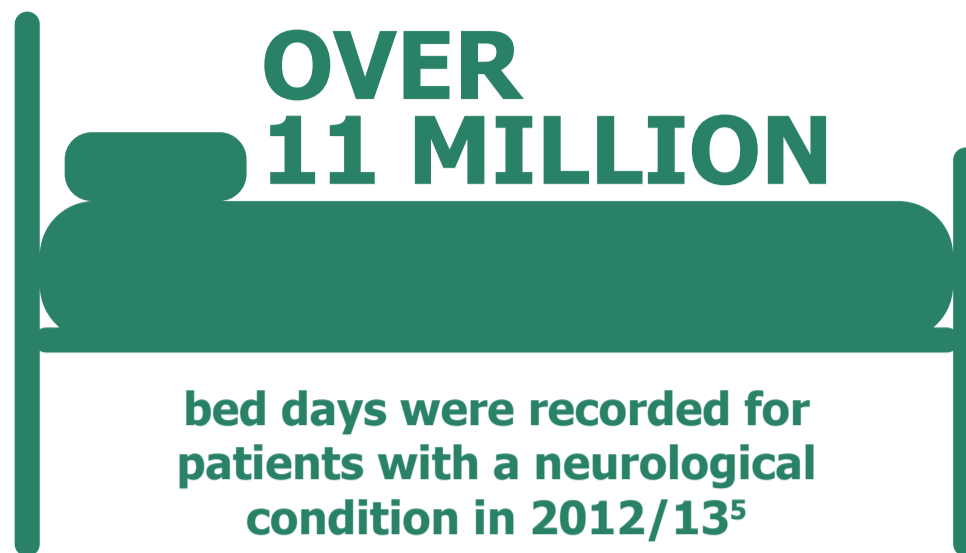
were recorded for
people with a neurological
diagnosis in 2012/13 - this
represents an increase of
more than 500,000 over
a five year period⁴

References

¹ Department of Health, *Programme budgeting data 2012/13*, February 2014

² Health and Social Care Information Centre, *Number of Finished Admission Episodes (All, Elective and Emergency) for Neurological Conditions by England and CCG of Treatment (2012-13)*, March 2014. Available here: <http://www.hscic.gov.uk/catalogue/PUB13776>

³ Department of Health, *Programme Budgeting Data 2012/13*, February 2014



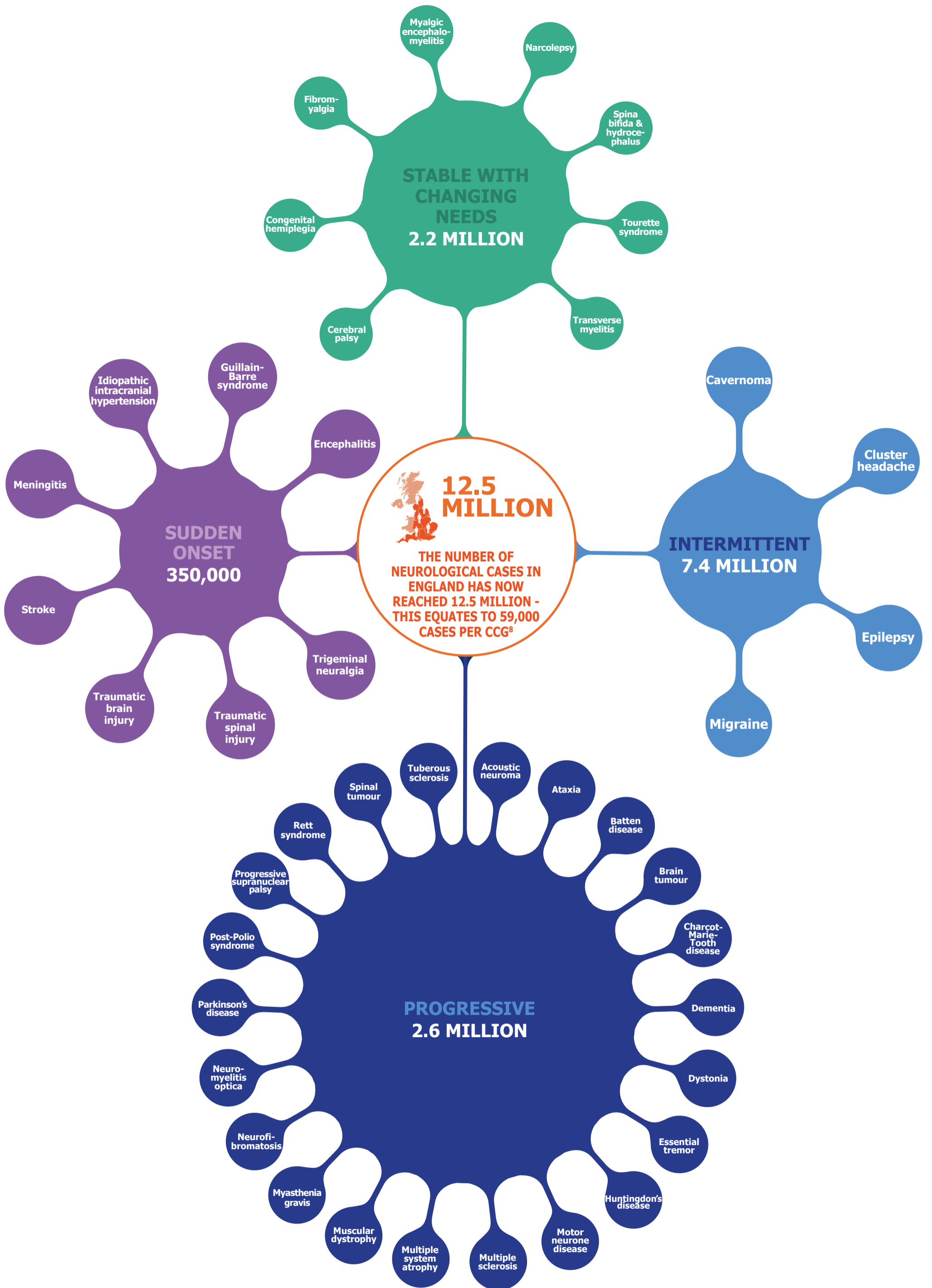
References

⁴ Health and Social Care Information Centre, *Number of Finished Admission Episodes (All, Elective and Emergency) for Neurological Conditions by England and CCG of Treatment (2012-13)*, March 2014. Available here: <http://www.hscic.gov.uk/catalogue/PUB13776>

⁵ Health and Social Care Information Centre, *Number of bed days for Neurological Conditions for England and CCG of Treatment (2012-13)*, March 2014. Available here: <http://www.hscic.gov.uk/catalogue/PUB13776>

⁶ Health and Social Care Information Centre, *Tables showing mean and median length of stay for patients with primary and secondary diagnoses of a neurological condition, by primary care trust (of main provider) for the years 2007-08 to 2011-12*. Available at: http://www.parliament.uk/business/publications/business-papers/commons/deposited-papers/?page=3&td=2014-01-01&search_term=Department%20of%20Health&itemId=119014#toggle-1749

⁷ House of Commons Committee of Public Account, *Services for people with neurological conditions*, February 2012. Available at: <http://www.publications.parliament.uk/pa/cm201012/cmselect/cmpubacc/1759/1759.pdf>



⁸ Figures based on estimations of condition prevalence using the references detailed in the accompanying data table overleaf. Where only UK prevalence figures were available a calculation has been made based on the Office for National Statistics estimation of UK and England populations, available here: <http://www.ons.gov.uk/ons/rel/pop-estimate/population-estimates-for-uk-england-and-wales-scotland-and-northern-ireland/mid-2011-and-mid-2012/index.html>, and the Central Statistics' Office estimation of the Republic of Ireland's population, available here: http://www.cso.ie/en/releasesandpublications/er/pme/populationandmigrationestimatesapril2013/#.Uw47Wvl_vmc

Condition	Categorisation	Prevalence (England)	Reference	Incidence
Acoustic neuroma	Progressive	845	British Acoustic Neuroma Association http://www.bana-uk.com/	-
Ataxia	Progressive	8,400	Ataxia UK http://www.ataxia.org.uk/ AT Society http://www.atsociety.org.uk/	-
Batten disease	Progressive	170	Batten Disease Family Association http://www.bdfa-uk.org.uk/about-batten-disease	-
Brain tumour	Progressive	-	Brain Research Trust http://www.brt.org.uk/brain-tumours Brain Tumour UK http://www.braintumouruk.org.uk/	13,000 diagnoses each year in the UK
Cavernoma (includes symptomatic brain cavernoma)	Intermittent	75,730	Cavernoma Alliance UK http://www.cavernoma.org.uk/cavernoma.html	-
Cerebral palsy	Stable with changing needs	24,620	Scope http://www.scope.org.uk/help-and-information/cerebral-palsy/introduction-cerebral-palsy	-
Charcot-Marie-Tooth disease	Progressive	19,320	CMT UK http://www.cmt.org.uk/What-is-cmt.php	-
Cluster headache	Intermittent	80,260	Migraine Trust http://www.migranetrust.org/factsheet-cluster-headache-10908	-
Congenital hemiplegia	Stable with changing needs	53,500	HemiHelp http://www.hemihelp.org.uk	-
Dementia (includes Alzheimer's)	Progressive	665,070	Alzheimer's Society http://www.alzheimers.org.uk/statistics	-
Dystonia	Progressive	58,800	Dystonia Society http://www.dystonia.org.uk/index.php/about-dystonia ADDER http://www.actionfordystonia.co.uk/	-
Encephalitis	Sudden onset	-	The Encephalitis Society Http://www.encephalitis.info/information/the-illness/frequently-asked-questions/	6,000 cases in England each year
Epilepsy	Intermittent	504,000	Epilepsy Action https://www.epilepsy.org.uk/info/what-is-epilepsy Epilepsy Society http://www.epilepsysociety.org.uk/ Joint Epilepsy Council http://www.jointepilepsycouncil.org.uk/ SUDEP Action https://www.sudep.org/	-
Essential tremor	Progressive	1,417,960	National Tremor Foundation http://www.tremor.org.uk/ Patient UK http://www.patient.co.uk/health/Essential-Tremor	-
Fibromyalgia	Stable with changing needs	1,638,000	FibroAction http://www.fibroaction.org/Pages/About-Fibro.aspx	-
Guillain-Barre syndrome	Sudden onset	800	Gain Charity http://www.gaincharity.org.uk/	-
Huntingdon's disease	Progressive	6,580	Huntingdon's Disease Association http://www.hda.org.uk	-
Idiopathic intracranial hypertension	Sudden onset	800	IhavellH Foundation http://www.ihavellh.com	-
Meningitis	Sudden onset	-	Meningitis Research Foundation http://www.meningitis.org/facts	3,200 cases per year in the UK
Migraine	Intermittent	6,720,000	Migraine Trust http://www.migranetrust.org/key-statistics	-
Motor neurone disease	Progressive	3,750	MND Association http://www.mndassociation.org/what-is-mnd/Brief+guide+to+MND.html	-
Multiple sclerosis	Progressive	84,000	MS Society http://www.mssociety.org.uk/what-is-ms MS Trust http://www.mstrust.org.uk	-
Multiple system atrophy	Progressive	2,520	Multiple System Atrophy Trust http://www.msatrust.org.uk/understanding-msa/what-is-MSA/	-

Muscular dystrophy	Progressive	58,800	Muscular Dystrophy Campaign http://www.muscular-dystrophy.org/ Action Duchenne http://www.actionduchenne.org/	-
Myalgic encephalomyelitis (ME)	Stable with changing needs	215,000	Action for ME http://www.actionforme.org.uk/ National ME Centre http://www.nmec.org.uk/	-
Myasthenia gravis	Progressive	6,300	Myasthenia Gravis Association http://www.mga-charity.org/information-mg/myasthenia-gravis/77-home/84	-
Narcolepsy	Stable with changing needs	21,000	Narcolepsy UK http://www.narcolepsy.org.uk/about-narcolepsy/who-does-it-affect	-
Neurofibromatosis	Progressive	21,860	The Neuro Foundation http://www.nfauk.org/what-is-neurofibromatosis/	-
Neuromyelitis optica	Progressive	840	NMO Specialised Services http://www.nmouk.nhs.uk/what-is-nmo/more-about-nmo	-
Parkinson's disease	Progressive	106,680	Parkinson's UK http://www.parkinsons.org.uk/content/about-parkinsons Cure Parkinson's Trust http://www.cureparkinsons.org.uk	-
Post-Polio syndrome	Progressive	100,800	British Polio Fellowship http://www.britishpolio.org.uk/ Polio Survivors Network http://www.poliosurvivorsnetwork.org.uk/	-
Progressive supranuclear palsy	Progressive	5,880	PSP Association http://www.pspassociation.org.uk/what-is-ppsp/	-
Rett syndrome	Progressive	2,250	NHS Choices http://www.nhs.uk/conditions/Rett-syndrome/Pages/Introduction.aspx	-
Spina bifida and hydrocephalus	Stable with changing needs	-	NHS Choices http://www.nhs.uk/conditions/hydrocephalus/pages/introduction.aspx	1 in 1,000 born in Britain
Spinal tumour	Progressive	-	Macmillan Cancer Support http://www.macmillan.org.uk/Cancerinformation/Cancertypes/Spinalcord/Spinalcordtumours.aspx	4,700 per year in the UK
Stroke (includes ischaemic and hemorrhagic)	Sudden onset	316,080	Stroke Association http://www.stroke.org.uk/news/stroke-facts-and-statistics-your-area Fighting Strokes http://www.fightingstrokes.org/ Different Strokes http://www.differentstrokes.co.uk/	-
Tourette syndrome	Stable with changing needs	252,000	Tourette's Action http://www.tourettes-action.org.uk/67-what-is-ts.htm	-
Transverse myelitis	Stable with changing needs	3,820	Transverse Myelitis Society http://www.myelitis.org.uk/treatment-and-recovery.html	-
Traumatic brain injury (defined as ranging from minor brain injuries to severe injuries causing long-term disability)	Sudden onset	-	Headway http://www.headway.org.uk/key-facts-and-statistics.aspx UKABIF http://www.ukabif.org.uk/	170,000 per year in the UK
Traumatic spinal injury (includes falls and road traffic accidents and sporting accidents, such as through horse riding, diving and rugby)	Sudden onset	31,200	Every Eight Hours Campaign http://www.everyeighthours.com/about-spinal-cord-injury	-
Trigeminal neuralgia	Sudden onset	-	Trigeminal Neuralgia Association http://www.tna.org.uk/	Annual incidence of new cases in England of 7,000
Tuberous sclerosis	Progressive	6,720	Tuberous Sclerosis Association http://www.tuberous-sclerosis.org/about_TSC.html	-